

 CHARLES  
DARWIN  
UNIVERSITY

# The demography of measuring social capital in the Northern Territory

Andrew Taylor, Demographer, Northern Institute



NORTHERN  
INSTITUTE  
People. Policy. Place.



# Demography and Growth Planning @CDU



Through applied research we investigate the causes and consequences of population changes with emphasis on the Northern Territory and the north of Australia.

We are driven to make positive differences to communities, society and policy through robust and independent research.

Dr Sigurd Dyrting



Demographer

Dr Dávid Karácsonyi



Human Geographer

Ms Fiona Shalley



Demographer

Assoc. Prof Andrew Taylor

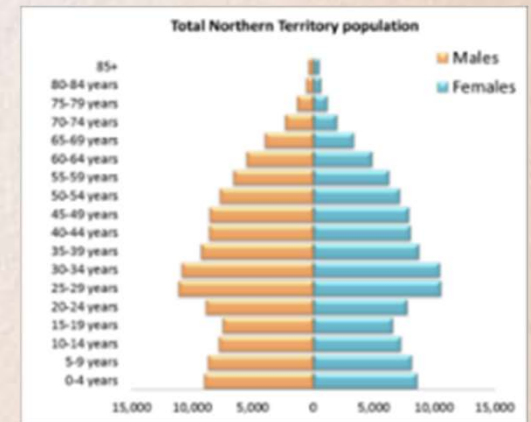
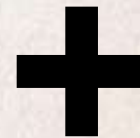


Demographer

‘Demography’ is a combination of two Greek words, ‘Demos’ meaning people and ‘Graphy’ - the science of measuring/ charting

**Dēmos (people)**

**Graphy (measuring/ charting)**

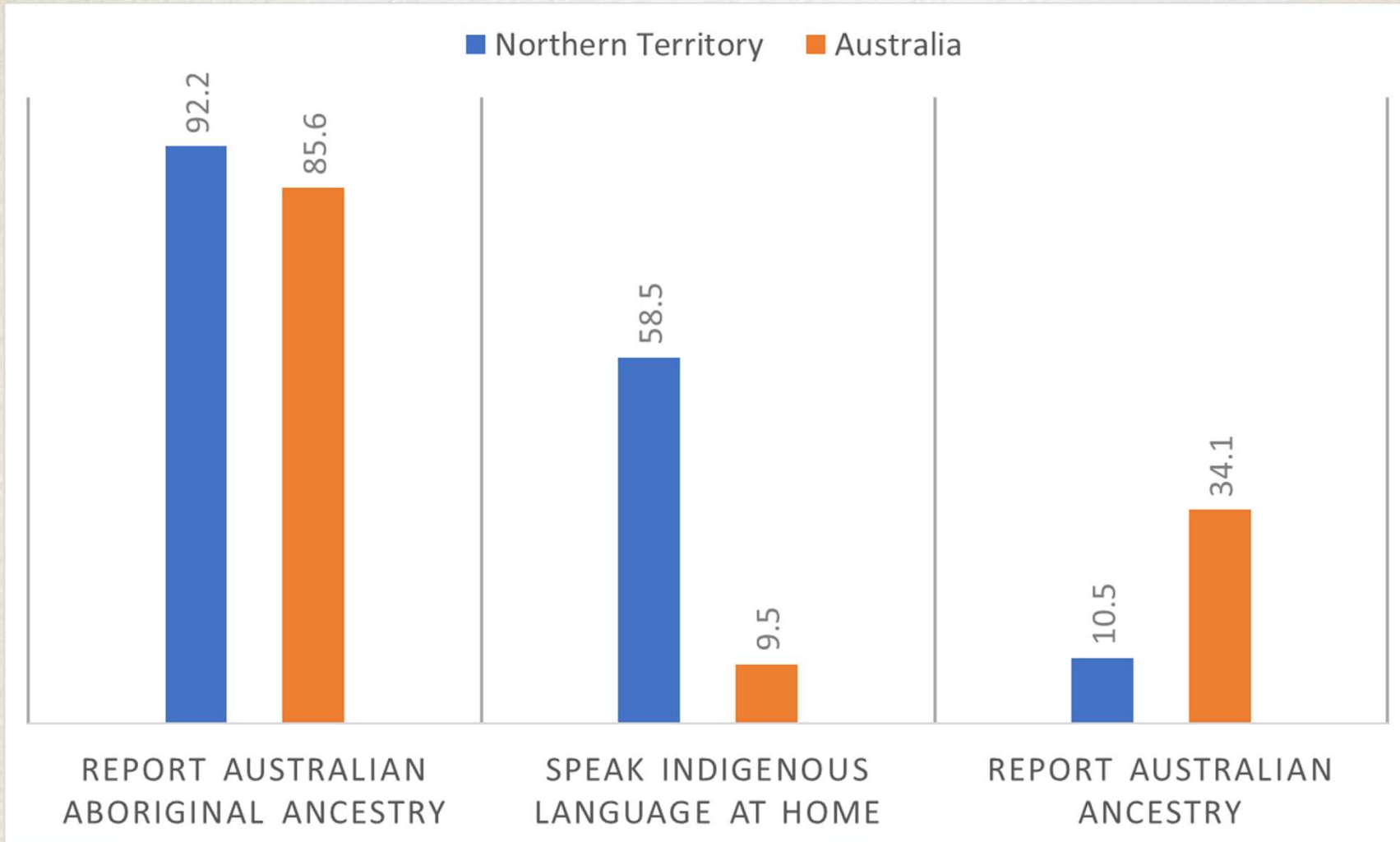






Five key Territory demographic considerations  
for constructing the NT's first Social Capital Index

# 1. Our large population of First Territorians

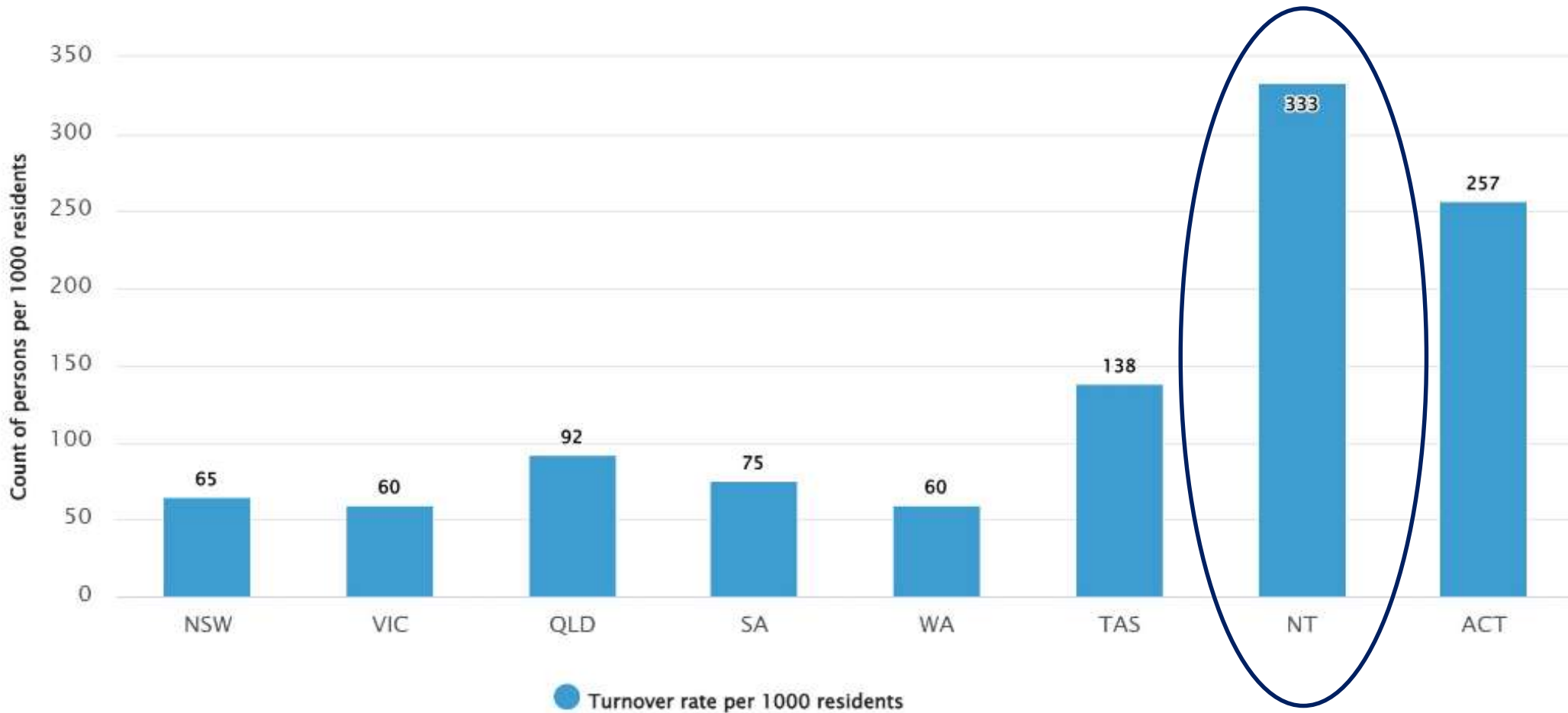


Source: Australian Bureau of Statistics, 2021 Census data

## 2. A Territory of churn and return



Population turnover rate(a) five years before the Census by state and territory, 2021



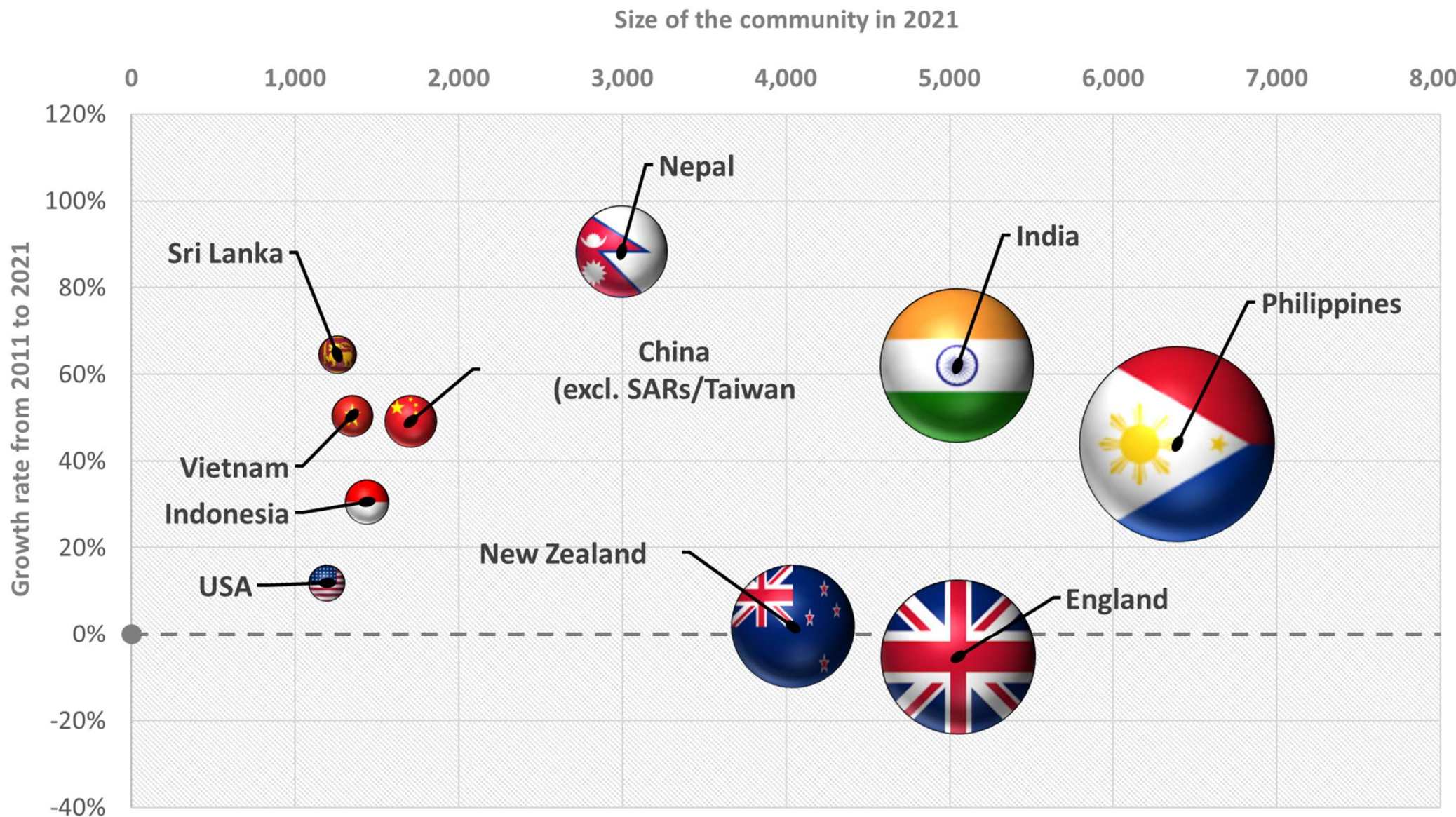
● Turnover rate per 1000 residents

a. Turnover rates are calculated by dividing the gross moves (arrivals plus departures) of each state and territory by its population aged five years and over.

Source: Australian Bureau of Statistics, Population movement in Australia 8/11/2022



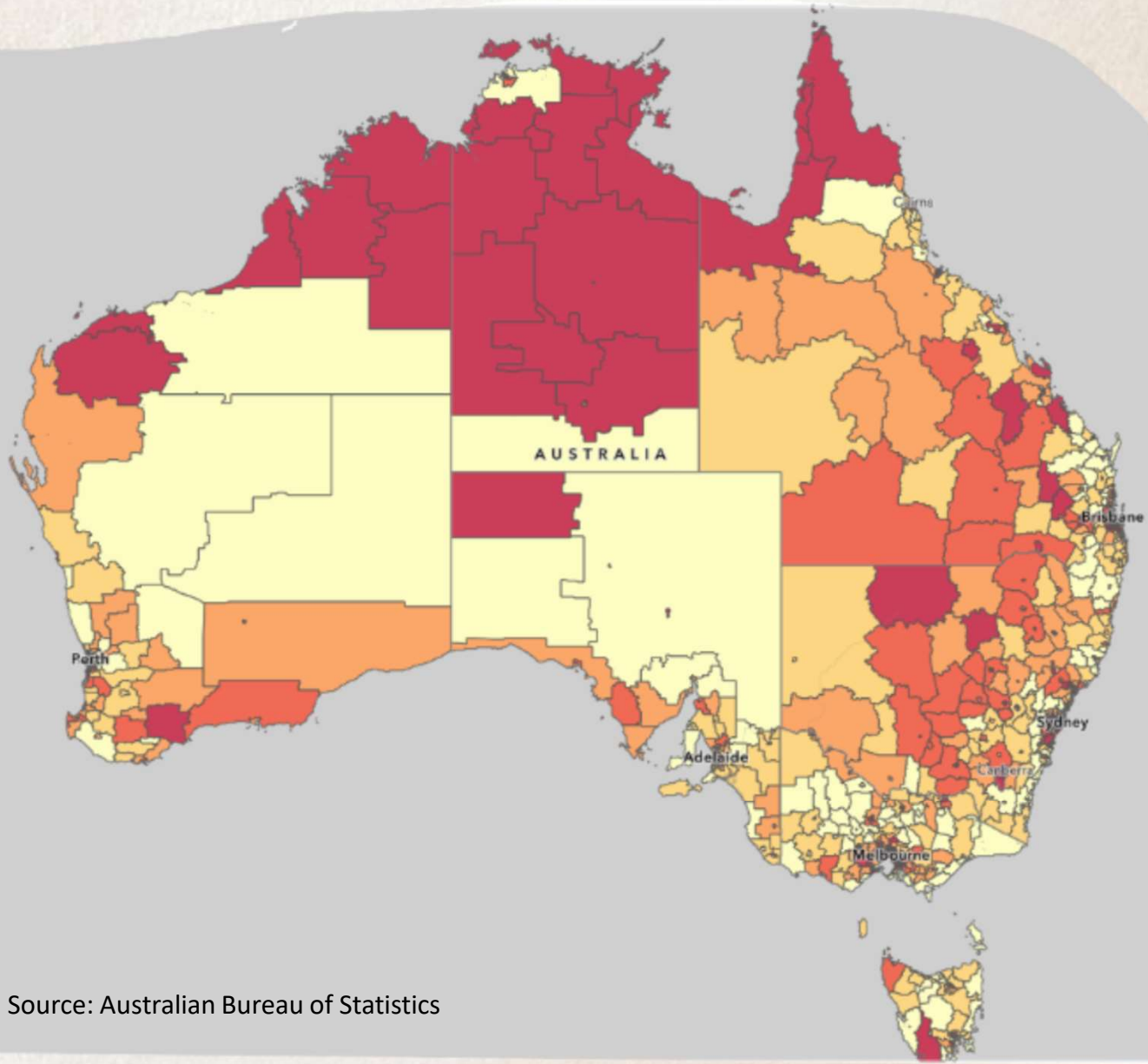
# 3. Our diverse and growing multicultural fabric



Source: Australian Bureau of Statistics, 2021 and 2011 Census data



# 4. A young Territory



Population aged 0 to 14 years

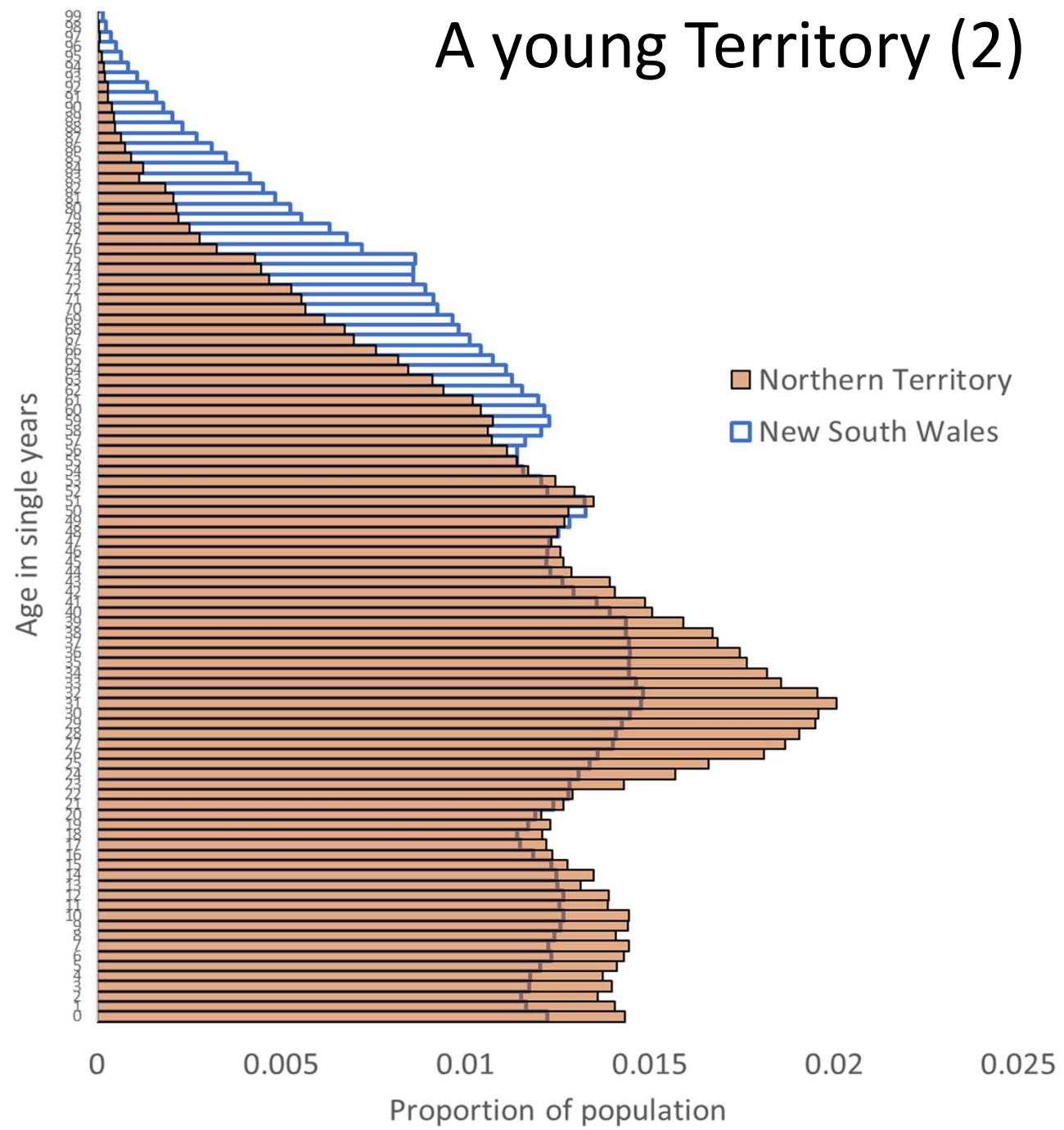
Per cent (%)

- 22.0 or more
- 20.0 to less than 22.0
- 18.0 to less than 20.0
- 16.0 to less than 18.0
- Less than 16.0

Source: Australian Bureau of Statistics

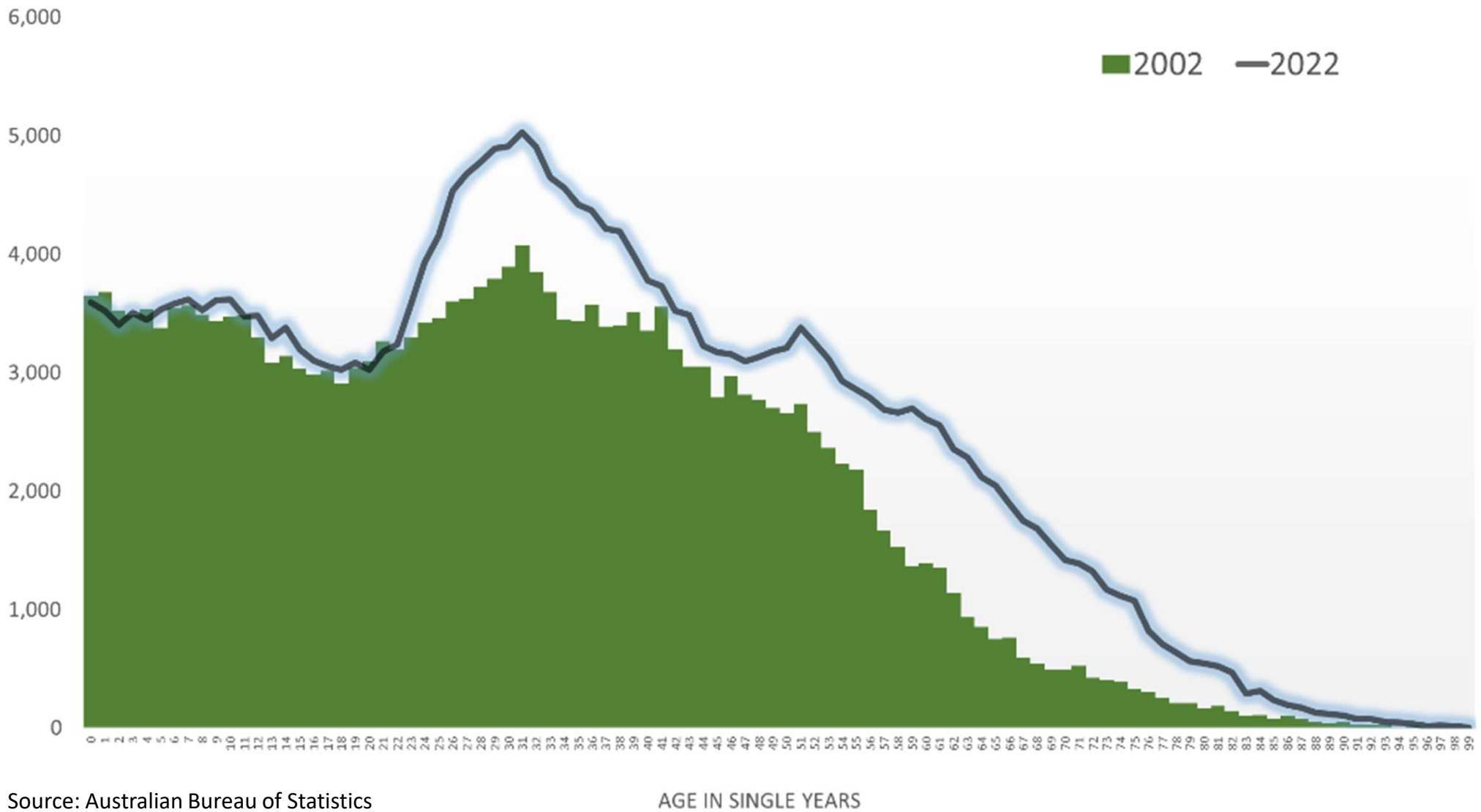


# A young Territory (2)



Source: Australian Bureau of Statistics

# 5...But ageing rapidly



Source: Australian Bureau of Statistics




# Putting all that together...

- Demographically we are very different to other States and our population makeup is changing.
- Measuring social capital requires deep understanding of differences within the NT population AND ongoing population changes.
- Many people come and go each year, bringing and taking away social capital and tacit knowledge.
- Our diverse and changing population challenges measuring social capital in the Territory – more so than elsewhere.



# The Northern Territory Social Capital Index

Addresses these challenges as a composite index to capture and articulate the impacts of population diversity and change on our social capital



**Index**

*['in-,deks]*

A tool for measuring change in a group of representative data

The complex block features a blue background. On the left, there is a line graph with multiple data series in various colors (black, white, blue, green) plotted against a grid. A magnifying glass is positioned over the graph, focusing on a specific area. To the right of the graph, the word "Index" is written in a large, bold, black font. Below it, the phonetic transcription *['in-,deks]* is shown in a smaller, italicized font. Further down, a descriptive sentence reads: "A tool for measuring change in a group of representative data".